



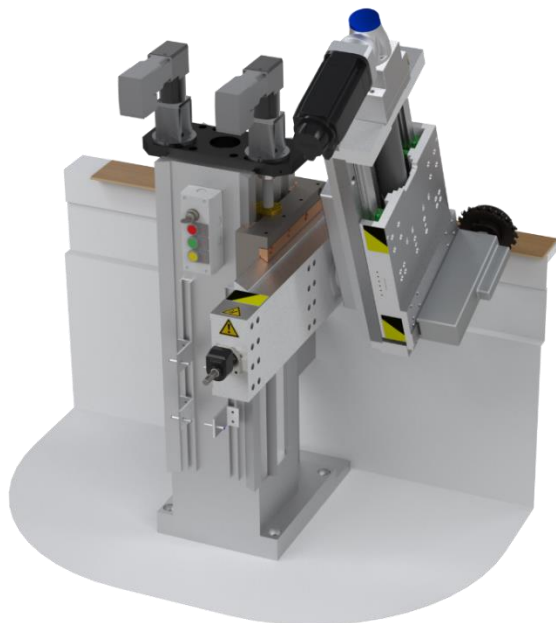
PJ-80-S/D

PROFILE JUMPER

The reliable way to take full control over your profile.



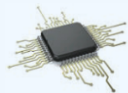
Ideal for:
UNZIP
PATENTED TECHNOLOGY



PJ-80-S/D



- Designed to produce intermitting profiles with extreme precision
- Used for a variety of applications: laminate floor planks, luxury vinyl tiles, wooden furniture panels, etc...



- Provides optimal control of profile shape and depth in function of variable line speed
- Separate control unit and integrated safety



- A robust linear carriage for high efficiency at continuous operation
- Compact design and mounting flexibility allows easy integration in the existing process



- Long-life trouble-free operation
- Smooth installation and start-up by experienced technicians

DATA SHEET MILLING

- Speeds up to 80m/min*
- Compact design: width < 290 mm
- Adjustable intermission length and position
- Integrated panel position detection
- No minimum panel gap required
- Technical installation document available on request

* Higher speeds available on request

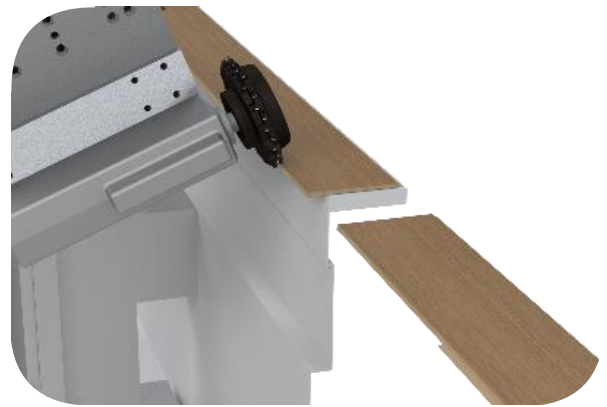
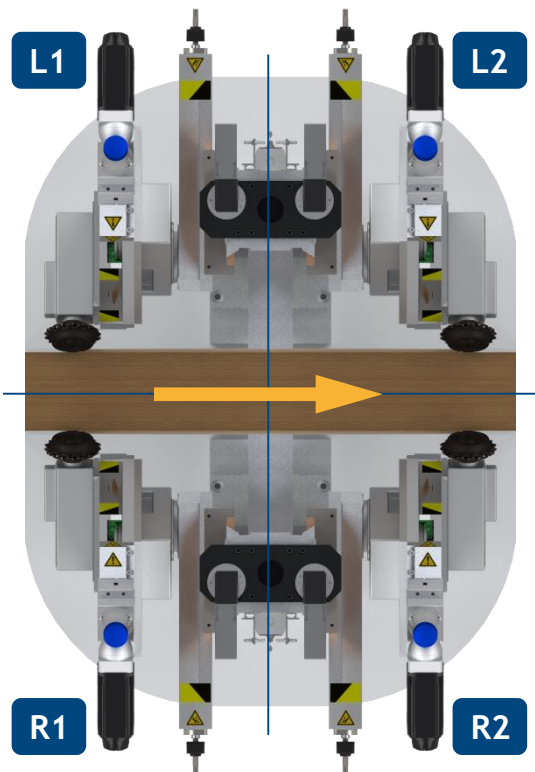
OPTIONS

- Intermediate X-Z carriage, attached to existing support
- Stand-alone support with intermediate X-Z carriage

MODELS

- PJ-80-S, single execution
- PJ-80-D, double execution

MOUNTING VARIANTS



INSTALLATION EXAMPLES

- Install 1 x PJ-80-S in the length milling process to create Herringbone patterns.
- Install 1 x PJ-80-S in the length milling process and 1 x PJ-80-D in cross milling process to create Herringbone and row patterns.

avercon
YOUR CONCEPT INTO PRODUCTION

Avercon holds over 25 years of experience in engineering: a process that starts with creative ideas and results in long-term commitments to our clients.

T +32 (0)9 377 99 78 M info@avercon.be W www.avercon.be